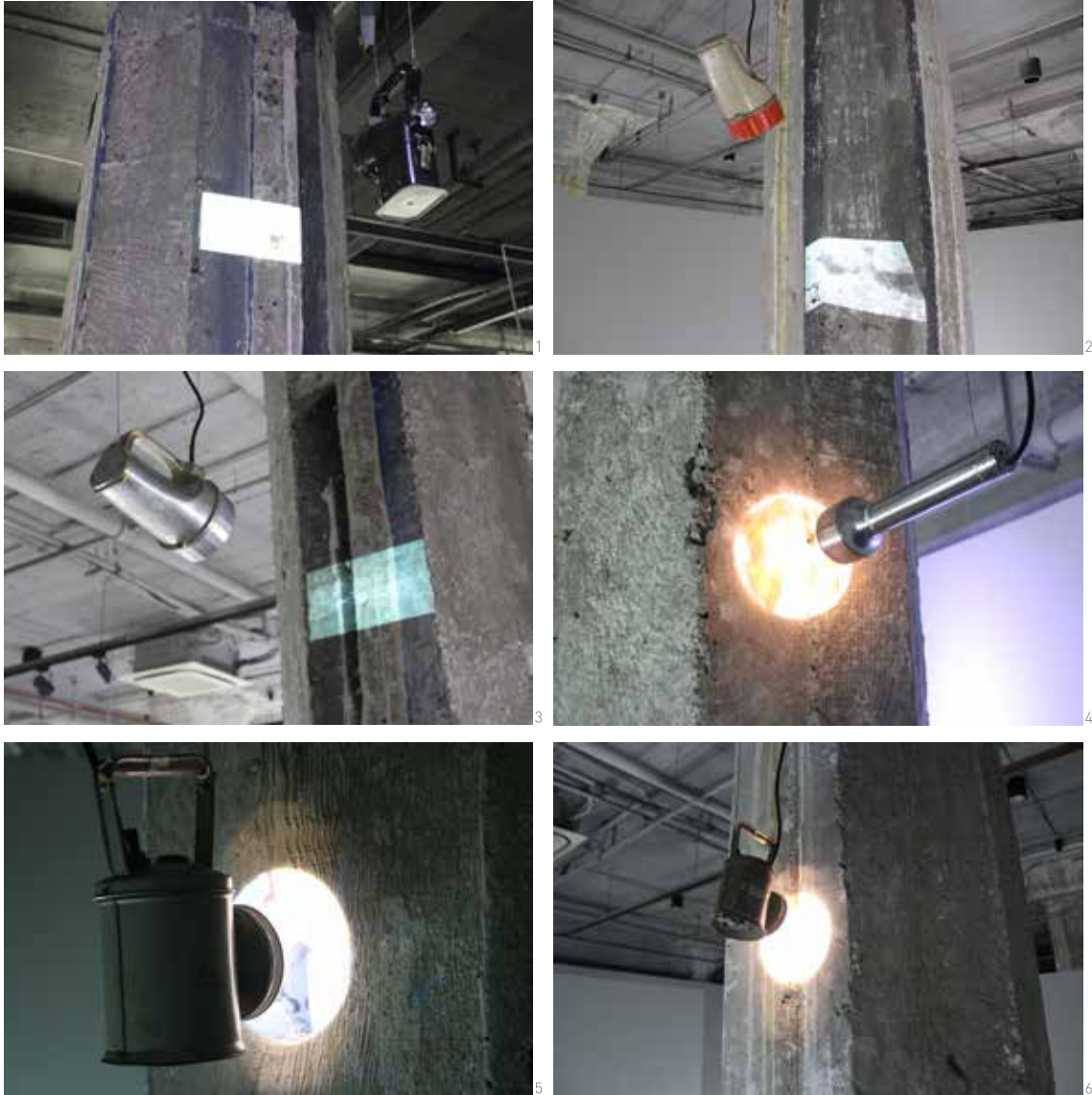


ShanghART Gallery

Booth Nr. 1C16

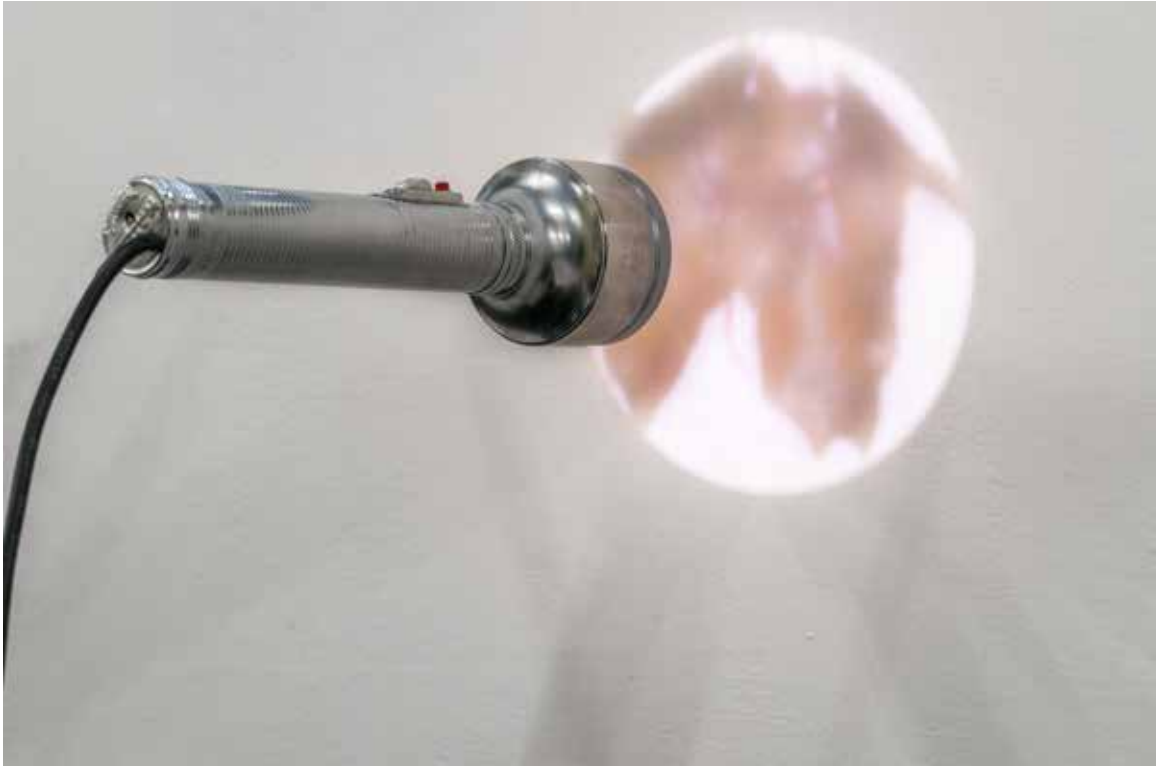
ShanghART
香格纳画廊

03.23 - 03.25, 2017
ART BASEL HONGKONG 2017



GENG Jianyi 耿建翌

1. *Stubborn Image A-3* 投影顽固 A-3 | Single-channel video, signal light, mini projector, animation 13 seconds, looping every 9h 14' 40"
单屏视频, 塑料信号灯, 迷你投影仪, 动画 13 秒, 每 9 小时 14 分 40 秒循环播放, 2016, 20×14×30cm, GJY_8504
2. *Stubborn Image A-7* 投影顽固 A-7 | Single-channel video, explosion-proof torch, mini projector, animation 13 seconds, looping every 9h
单屏视频, 防爆手电筒, 迷你投影仪, 动画 13 秒, 每 9 小时循环播放, 2016, 27×27×17cm, GJY_2375
3. *Stubborn Image A-8* 投影顽固 A-8 | Single-channel video, explosion-proof torch, mini projector, animation 13 seconds, looping every 9h 4' 19"
单屏视频, 防爆手电筒, 动画 13 秒, 每 9 小时 4 分 19 秒循环播放, 2016, 27×27×17cm, GJY_8543
4. *Stubborn Image C-4* 投影顽固 C-4 | Hand paint on lens glass by mark pen,
使用马克笔手绘与镜头玻璃上, 2016, 5×15×32cm, GJY_1814
5. *Stubborn Image D-2* 投影顽固 D-2 | Signal lamp, motor, hand paint,
铁皮信号灯, 电机马达, 手绘, 2016, 20×20×29cm, GJY_7109
6. *Stubborn Image D-4* 投影顽固 D-4 | Signal lamp, motor, hand paint,
铁皮信号灯, 电机马达, 手绘, 2016, 20×20×29cm, GJY_8280



GENG Jianyi 耿建翌

Stubborn Image C-4 投影顽固 C-4 | Installation Hand paint on lens glass by mark pen,
装置 使用马克笔手绘与镜头玻璃上, 2016, 5×15×32cm, GJY_1814



LI Shan 李山

Reading 1999 阅读 1999

Acrylic on linen, 亚麻布丙烯, 1999, 99×136cm, LS_2521



The Grand Voyage - GUO Xi & ZHANG Jianling 大航海 - 郭熙 & 张健伶

A Man Gifted with Photographic Memory 一个过目不忘的人
Single-channel video, 单路视频, 2017, Edition of 3 + 1AP, GV_9540

两位艺术家在八十六天的旅程中见证了十二个预言，并将物证带回“已知的大陆”。预言不仅折射了通往主题的种种潜在路径，而且作为索引，牵扯出无限的文本与无尽的阅读。在途制作的航行日志里，艺术家们开始道出一千个角色的故事，这些人物如同藤蔓般盘踞在预言内外，与他们共同见证一路不思议。角色们各自拥有的邮包将逐渐在不同的展示时空中被打开，他们的记忆将在图像 - 物证 - 文本的星群中被唤醒。

In 86 days cross-ocean journey, two artists have borne witness to twelve prophecies and sent back to "continents of the Known" the evidence as visuality of testimonies. The twelve prophecies not only reflect potential routes to the theme but also serve as an index leading to infinite texts and endless interpretations. In *Journal from the Grand Voyage* produced along the way, the artists start to tell stories of one thousand characters who are likened to a vine twining around prophecies accompanying them to witness the miraculous. In a series of future exhibitions, they will unpack one thousand parcels and corresponding owners dwelling within. In the constellation of image-evidence-text, memories of the characters will be brought to light.



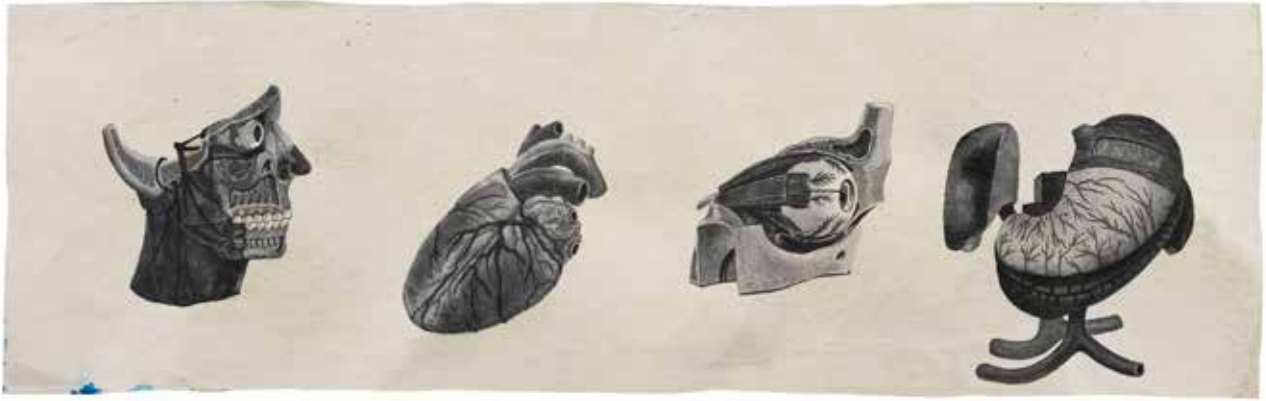
The Grand Voyage - GUO Xi & ZHANG Jianling 大航海 - 郭熙 & 张健伶

A Man Gifted with Photographic Memory 一个过目不忘的人
Colour inkjet, 彩色喷墨打印, 2016, 40×60cm, Edition of 3 + 1AP,
GV_1691, GV_2504, GV_2685
GV_2813, GV_5559, GV_6505
GV_4967, GV_8830, GV_9700



YU Youhan 余友涵

A Pocket Western Art History about Mao-Foreign Maos 毛主席的西方美术简史
Acrylic on canvas, 布上丙烯, 2005, 148x105cm, YYHU005



SUN Xun 孙逊

Mythological Time 11,15 通向大地的又一道闪电 11,15

Ink and acrylic on bark paper, 树皮纸上水墨和丙烯, 2016, 50×162cm, 100×308cm, SX_4714, SX_2765

该组绘画作品源自动画录像作品《通向大地的又一道闪电》(2016), 由以中国古典风格绘制在传统树皮纸上的绘画构成。作品围绕艺术家的故乡, 中国东北部的阜新展开。这座依靠煤矿业而建设的, 曾经无比重要的能源城市一直到如今没落的“遗忘角落”, 这中间有民俗的传奇, 有政治信仰的更叠, 更有历史的变迁。

These paintings are derived from animation video work “Mythological Time” (2016), composed of Chinese classical painting (ink and acrylic) on traditional bark paper. The work explored the artist’s hometown- Fuxin, which was located in northeastern of China and particularly for coal industry. It narrates how an industrial city used to be incomparably important in Northeast China, but now on its wane to be forgotten. The featured legendary of folk customs, the alteration of political beliefs, and the historical changes are glimpsed.



1



2



3

SUN Xun 孙逊

Mythological Time 01,18,25 通向大地的又一道闪电 01,18,25

Ink and acrylic on bark paper, 树皮纸上水墨和丙烯, 2016, 100×306cm, 100×310cm, 100×312cm, SX_6720, SX_2863, SX_5292



YUAN Yuan 袁远

Barber in the Jail 监狱理发店

Oil on linen, 亚麻布上油画, 2016, 170×180cm, YY_5941



LU Lei 陆垒

Man Ray's Violin 曼雷的提琴

Aluminum alloy, brass, wood, compressor, 铝板, 铜管, 木, 压缩机, 2017, 290×125×90cm, LL_2680

这件作品根据曼雷在 1924 年拍摄的《安格尔的小提琴》创作。用曼雷的方式，同样的向古典致敬。作品底板，采用黄金分割圆取形，用压缩机带动铜管制做的消化系统图形结霜。往复循环。艺术家希望作品中呈现的机械美感，可以呈现出早期现代主义的精神性。

This work is inspired by the Man Ray's photography "Ingre's Violin" created in 1924, paying tribute the classical in a way of Man Ray. The background board is cut into form according to golden section circle. There is a compressor to make the graphic of digestive system frosted. It works in a periodical way. The artist hopes to render a mechanical aesthetic which represents early modernism spirit.



"Man Ray's Violin" detail



HUANG Kui 黄奎

A Skeleton That Has Severe Lung Disease 患有严重肺病的骨架
Acrylic on paper, 纸上丙烯, 2016, 110×90cm, HK_5874



HUANG Kui 黄奎

Abandoning the Universe 星际遗弃
Acrylic on paper, 纸上丙烯, 2016, 110×90cm, HK_3579



1



2

BIRDHEAD 鸟头

1. *Passions Bloom Ambitions from Vagina-25* 情放志荡 -25 | Gelatin silver print, 银盐黑白照片, 2016, 136×142.2cm, 50.8×41.4cm, BH_3550
2. *Passions Bloom Ambitions from Vagina-26* 情放志荡 -26 | Gelatin silver print, 银盐黑白照片, 2016, 171.7×250cm, BH_8917



OUYANG Chun 欧阳春

The Bright Sun Like Me 艳阳如我

Oil on canvas, 布上油画, 2014, 100×243cm, each 100×81cm(x3 pieces), OYC_6039



YU Youhan 余友涵

Nothing Is Everything 真空也有物

Acrylic on canvas, 布上丙烯, 2007-2015, 183x172cm, YYH_4100



HU Jieming 胡介鸣

The Remnant of Images - Day & Night - E 残影 - 昼 & 夜 - E

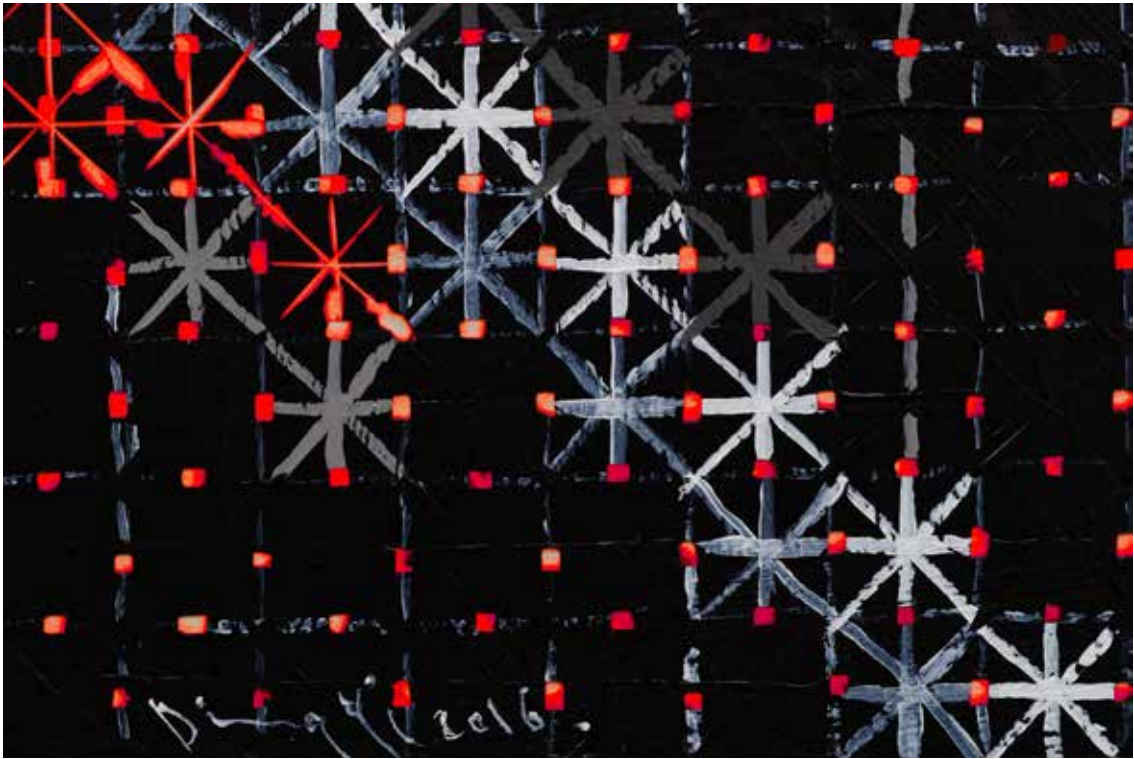
Multi-channel video, IPS screen, PC host, 多路视频, IPS 显示屏, PC 主机, 2017, 47×78×9cm, 20.5×31×3.5cm×2, HJM_9769



DING Yi 丁乙

Appearance of Crosses 2016-12 十示 2016-12

Acrylic on basswood panel with engravings, 椴木板上丙烯雕刻, 2016, 240×240×6cm, DY_2676

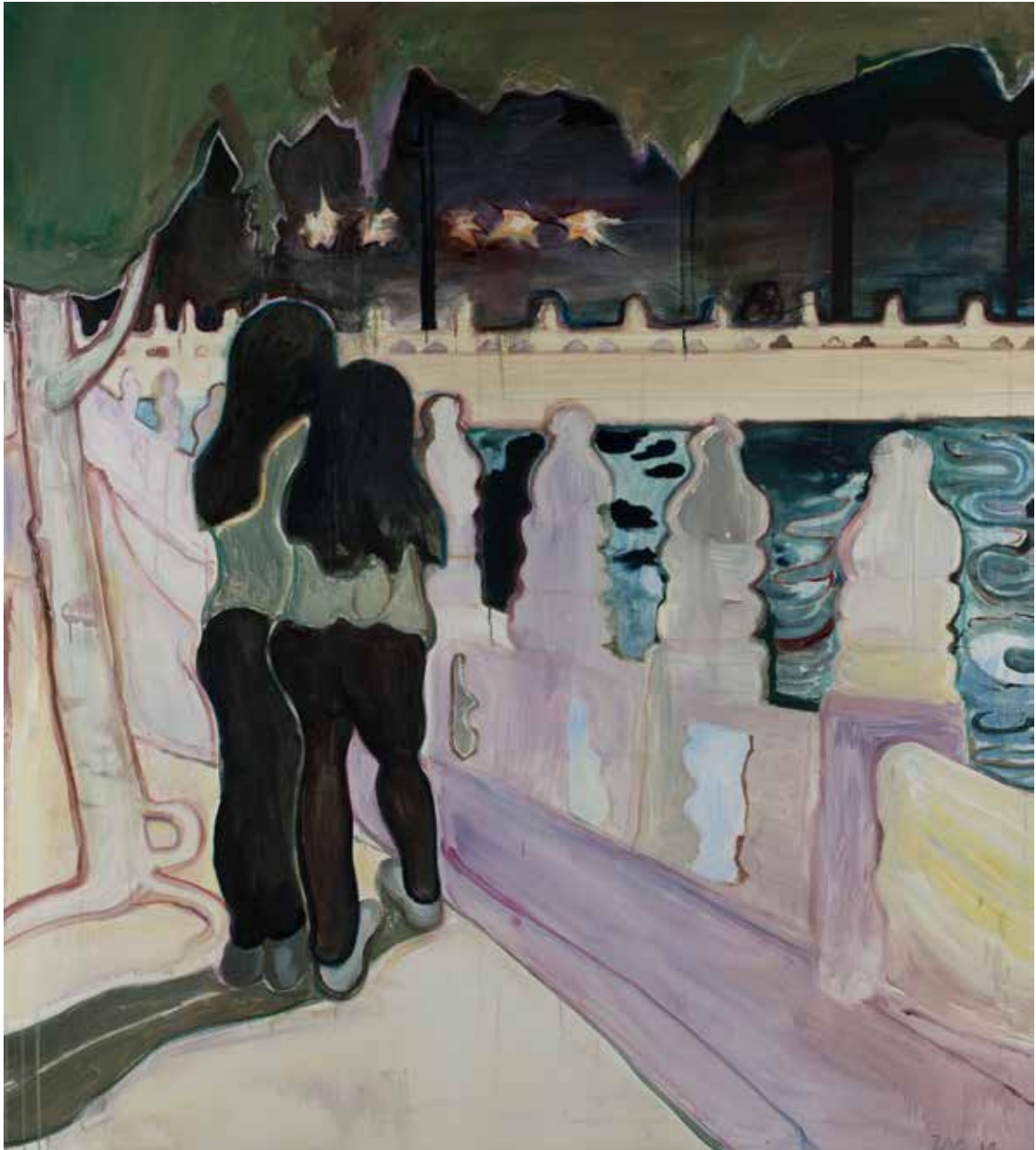


"Appearance of Crosses 2016-12" detail



SHI Yong 施勇

Let All Potential be Internally Resolved using Beautiful Form No.24 让所有的可能都在内部以美好的形式解决 No.24
Aluminium square tube, stainless steel bolt, metallic paint, aluminium, serigraph, 铝方管, 不锈钢螺栓, 金属漆, 铝, 丝网印, 2015,
24×200×20cm, Edition of 3 + 1AP, SY_6564



ZHAO Yang 赵洋

Ah! Houhai 啊! 后海

Oil & acrylic on canvas, 布面油彩 & 丙烯, 2016, 200×180cm, ZY_3536



YUAN Yuan 袁远

Church in the Mirror 镜子里的教堂
Oil on linen, 亚麻布上油画, 2016, 180×135cm, YY_7050



ZHAO Yang 赵洋

Girls and Elephant 女孩和大象

Oil on canvas, 布上油画, 2016, 170×170cm, ZY_7656



DING Yi 丁乙

Appearance of Crosses 97-38 十示 97-38

Acrylic on tartan, 成品花格织物上丙烯, 1997, 260×80cm, DYU023



LIANG Shaoji 梁绍基

In Silence 于无声处

Plastic barrel, silk, cocoon, 塑料桶, 丝, 茧, 2016, 21×48×31cm, 34×60×42cm, 50×45×41cm, LSJ_7593

ShanghART 香格纳画廊

ShanghART West Bund 香格纳西岸
徐汇区龙腾大道 2555 号 10 号楼, 上海, 中国 200232
Bldg. 10, No.2555 Longteng Avenue, Xuhui District, Shanghai 200232, China
T: +86 21-6359 3923 | F: +86 21-6359 4570 | info@shanghartgallery.com

ShanghART Taopu 香格纳展库
武威东路 1518 号 (近祁连山路) 8 号楼, 上海, 中国 200433
Bldg 8, No.1518 Wuwei East Road (near Qilianshan Road), Shanghai 200433, China
T: +86 21-3632 2097

ShanghART Beijing 香格纳北京
朝阳区机场辅路草场地 261 号, 北京, 中国 100015
261 Cao Chang Di, Old Airport Road, Chaoyang District, Beijing 100015, China
T: +86-10 6432 3202 | F: +86-10 6432 4395 | infobj@shanghartgallery.com

ShanghART Singapore 香格纳新加坡
吉门营房, LOCK 路 9 号 02-22, 新加坡 108973
Gillman Barracks, 02-22, 9 Lock Road, Singapore 108937
T: + 65 6734 9537 | F: + 65 6734 9037 | info@shanghartsingapore.com