

**FOR IMMEDIATE RELEASE -- Contacts:**

Kelly Bogaert  
Wang Zineng

+65 8147 9515  
+65 8133 1623

kellybogaert@gmail.com  
zineng@gmail.com

Members of the press are invited to preview the exhibition on Wed. 24<sup>th</sup> March 2010, 12pm at Opera Gallery Singapore, #03-05, ION Orchard.



Fairy Tales\*

Selections from the MaGMA Collection

## 25 compelling episodes shared with remarkable contemporary art

Singapore, February 2010 – MaGMA, an acronym as well as a pseudonym for two private collectors and an art collection, will showcase a focused selection from the MaGMA Collection in an exhibition titled *Fairy Tales* at Opera Gallery, ION Orchard from the 26<sup>th</sup> March to 22<sup>nd</sup> April 2010. The exhibition will feature a compelling narrative inspired by events in real life, richly illustrated by contemporary art from the MaGMA Collection.

At the heart of MaGMA's origin is a profound encounter with a Roy Lichtenstein painting in Los Angeles that inspired two lives coming to union and the subsequent building of a collection of mainly Asian contemporary art. "I've found that many people have been profoundly influenced by my father's work, but not in the same way, or to the degree that MaGMA has" **Mitchell Lichtenstein**, son of Roy Lichtenstein, expressed in an interview.

The exhibition curator, **Wang Zineng** says "MaGMA counts as one of the most iconoclastic and enigmatic collectors around. Being the first full exposition of MaGMA, *Fairy Tales* is the culmination of more than a few years of imaginative and bold visioning, meticulous research and unwavering belief in the power and existence of divine providence." As the collection grew, so did a story begin to emerge about the lives of the individuals behind MaGMA, a story affirming the actuality of fate, narrated through works in the MaGMA Collection.

*Fairy Tales* will feature twenty-five works of contemporary art from the MaGMA collection, including important works never exhibited before by significant contemporary Chinese artists Liu Ye, Wang Guangyi, Yue Minjun, Li Shan, Zeng Fanzhi, and Zhou Chunya. Southeast Asian Artists David Chan, Justin Lee and Nyoman Masriadi are also featured, as well as French artists Pierre & Gilles and Bettina Rheims.

The exhibition will feature the artworks in portable diptychs specifically conceptualised and designed by **Studio Milou Architecture** in response to MaGMA's brief, giving physicality and prominence to the MaGMA narratives alongside the paintings. The works will be displayed at an unusually low height, creating for the public a new experience of walking through a giant fairy tale book.



Exhibition design incorporating diptychs by Studio Milou Architecture for MaGMA

Guiding the exhibition design by StudioMilou Architecture, *Fairy Tales* marries art viewing and story-telling in a never seen before exhibition format. The exhibition will inspire visitors with the power of its story, extending what has begun as a personal quest to understand an episode of divine providence into a compelling story of love, fate, wonder and quest for truth. "Each diptych is built to the scale of the work it contains, some being as large as cathedral doors and others as small as a jewel box" explains **Jean-François Milou**, lead partner of Studio Milou Architecture and chief architect for the National Art Gallery of Singapore.

While the MaGMA collection is not for sale, venue sponsor **Opera Gallery** will also simultaneously showcase their in-house exhibition, *Tales of China*, featuring superb works by many of the top names in Chinese contemporary art including Zeng Fanzhi, Zhang Xiaogang and Yue Minjun. **Stéphane Le Pelletier**, director of Opera Gallery, Asia-Pacific says "We've been touched by MaGMA's miraculous story, and of course by the quality of this lovingly assembled collection which has never been exhibited before. *Fairy Tales* will inspire our clients and perhaps new collecting vocations."

Presenting sponsor, **BNP Paribas Wealth Management**, has a long-standing tradition and passion for supporting the arts. BNP Paribas Wealth Management CEO for Asia Pacific **Serge Forti** confirms this, "MaGMA's collection is unique in both style and story and we are delighted to be able to offer our clients privileged access to this exhibition. Today, art investment is also an asset class that many of our clients are interested in and Wealth Management even has a dedicated Art Advisory Service, that was founded more than 25 years ago and offers tailored advice for clients in the negotiation of acquisitions and sales of art. We hope this exhibition will inspire art collectors as much as it has inspired us."

The exhibition is accompanied by an 80 pages full-coloured catalogue with heartfelt contributions from **Kwok Kian Chow**, Director of The National Art Gallery, Singapore; Mitchell Lichtenstein; and **Maria Giuseppina Caccia Dominioni Panza**, daughter of Giuseppe Panza di Biumo, the noted contemporary art collector.

The public is encouraged to share their own tales of how works of art have touched their lives or enriched their thoughts at [www.facebook.com/magma.sg](http://www.facebook.com/magma.sg). A **Fairytale Competition** is ongoing and the public has till 15<sup>th</sup> March to enter their stories and win a romantic weekend getaway at **Pan Pacific, Singapore**. Three winning entries will be displayed at Opera Gallery.

- END -

## **APPENDIX 1**

### **EXHIBITION INFORMATION**

#### **Fairy Tales – Selections from the MaGMA Collection**

Exhibition from 26 March to 22 April 2010

Opening hours: Weekdays – 11 am to 8 pm; Weekends – 10 am to 8 pm.  
Venue: Opera Gallery, #03-05 ION Orchard,  
2 Orchard Turn, Singapore 238801  
T : +65 6735 2618 E : spore@operagallery.com

---

#### **About MaGMA**

MaGMA is an acronym and the name of a privately-held art collection based in Singapore. The MaGMA Collection has been lovingly assembled by two passionate young collectors over the past decade and presently boasts more than 200 works of primarily Asian contemporary art in different media. At the heart of MaGMA's origin is a profound and life-changing encounter in 1999 with a Roy Lichtenstein painting, *Desk Calendar* (1962). The encounter, entitled the Calendar Story, marked an early and spectacular milestone for two lives coming to union and the subsequent building of a contemporary art collection.

[www.facebook.com/magma.sg](http://www.facebook.com/magma.sg)

[www.magma.sg](http://www.magma.sg)

---

### **SPONSORS AND SUPPORTERS**

Presenting Sponsor: BNP Paribas Wealth Management  
Venue Sponsor: Opera Gallery Singapore  
Exhibition Design: studioMilou architecture  
Exhibition Production: PICO Art

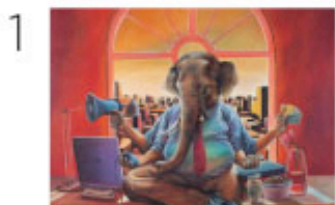
Supporters:

- AETOS
- eYeka Asia Pacific
- Helutrans
- Milk Photographie
- Monte Carlo S.B.M
- Orchid Link
- Pan Pacific Singapore
- Piper-Heidsieck Champagne
- Q Framing
- Samuel Seow Law Corporation

---

**Selected images from the MaGMA Collection**

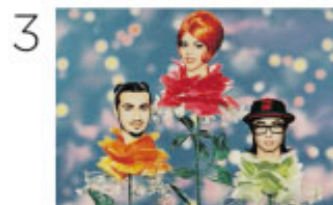
*High-resolution images available upon request.*



CEO of Categories  
David Chan  
180 x 150  
MaGMA



Lovers  
Yang Shaobin  
110 x 100  
MaGMA



Deee-Lite  
Pierre & Gilles  
138 x 118 (framed)  
91 x 71 (photo)  
MaGMA



Tigre  
Bettina Rheims  
143 x 123  
MaGMA



China China  
Zhu Wei  
112 x 53 x 106  
MaGMA



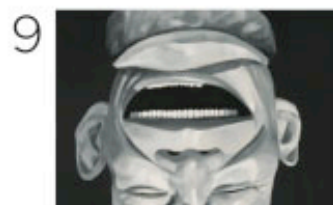
Mask No 6  
Zeng Fanzhi  
150 x 130  
MaGMA



Faithful Face No 1  
Wang Guangyi  
150 x 120  
MaGMA



Welcome to the Olympics  
Justin Lee  
138 x 197  
MaGMA



Untitled  
Yue Minjun  
120 x 42  
MaGMA