

唐茂宏个展
Tang Maohong Solo Exhibition
10/12-11/17, 2013

飞地控
Exclave Con



在这个以“飞地控”为大标题的展览里，“飞地”这一人文地理现象的概念被用来承载艺术家自身的视觉经验，知识结构和生存体验。“飞地”既是幻象也是实体。“飞地控”意味着创作上顽固的飞地化，即个人是一块没有母国的飞地，生存在一块没有母国的飞地上。

展览由图像装置和动画装置组成。艺术家将在大尺幅画面上呈现为“飞地”设计的各式徽标，这些徽标保持着唐茂宏对待图像一向似是而非的态度，模糊的指向着某个群体或情绪，可有可无中自有体系。动画装置则与早期跳跃的动画语言有很大变化，用一种极简且缓慢的画面语言来显现一段关于时间空间的叙述。

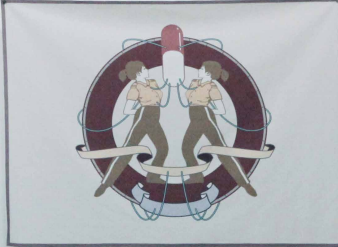
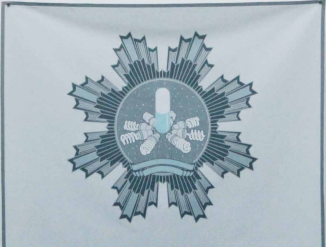
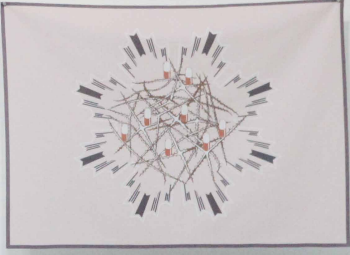
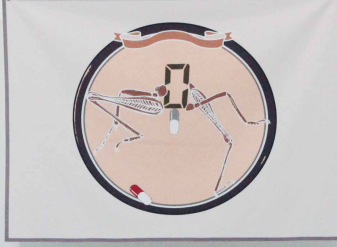
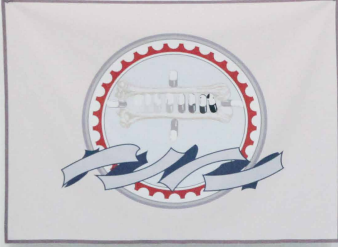
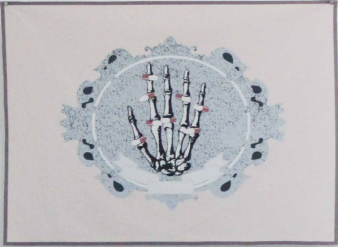
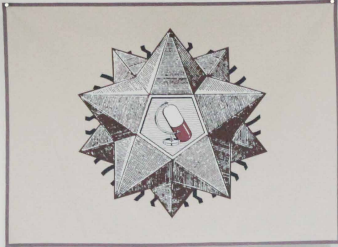
艺术家在涉及艺术史和大众文化的同时也暗中的破坏了它们。他整合了大量的视觉元素和主题事件，制造出的作品存在于高雅艺术和流行图像之间的模糊边界。在他的作品里，荒谬，神奇，幽默以及对峙这些因素共存一体，预示了这些象征性物体的设置，并非仅仅只是幻想那么简单。唐茂宏的图像世界所反映出的并非只是一个新主题的诞生——一个灵魂附着在变换如流的图像环境中的发自内心的想像，同时也是对因为负累而行动迟缓的传统的一个反向。

The exhibition consists of both image and animation installations. The artist will represent a string of logos designed for the “exclave” on a large scale. These logos keep a paradoxical attitude which he always adopts towards the image, and direct ambiguously to some group or emotion, and dispensable self-system. Compared with early dramatic language of animation, the new animation installation changes a lot as narration is displayed about time and space by using a kind of very simple and slow language of the frame.

Tang Maohong simultaneously references and undermines art history and popular culture. He has integrated a variety of visual elements and subject matters, producing works that inhabit the ever-blurred border between high art and popular illustration. His work is absurd, magical, humorous and confrontational, hinting that the juxtapositions of figurative objects might be more than just illusions. Tang Maohong’s pictorial universe reflects not only a new subject - a psyche whose internal eclectic imagination is echoed in the environment of constantly flowing images - but also the inversion of out-grown traditions.

展览现场 | Installation View





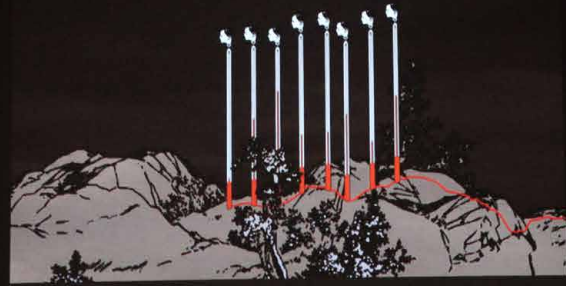


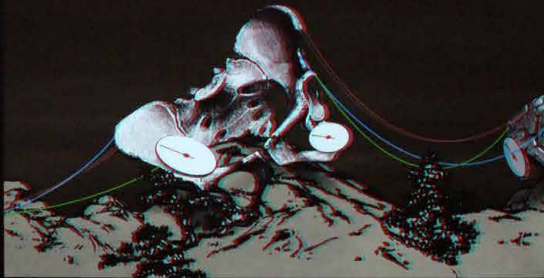
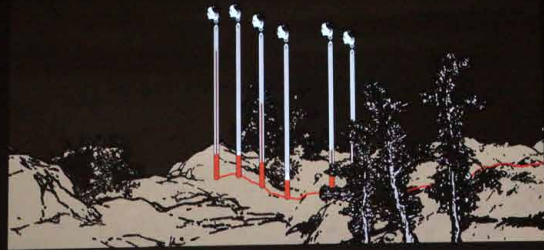






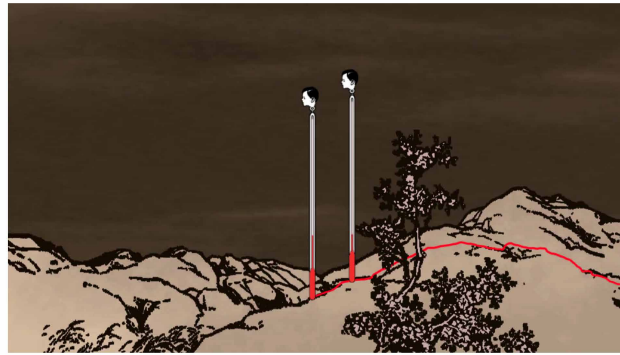
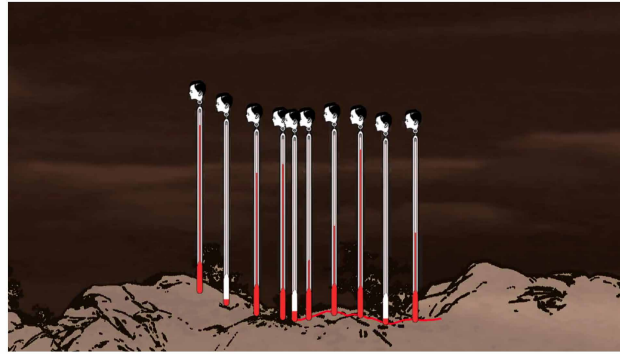




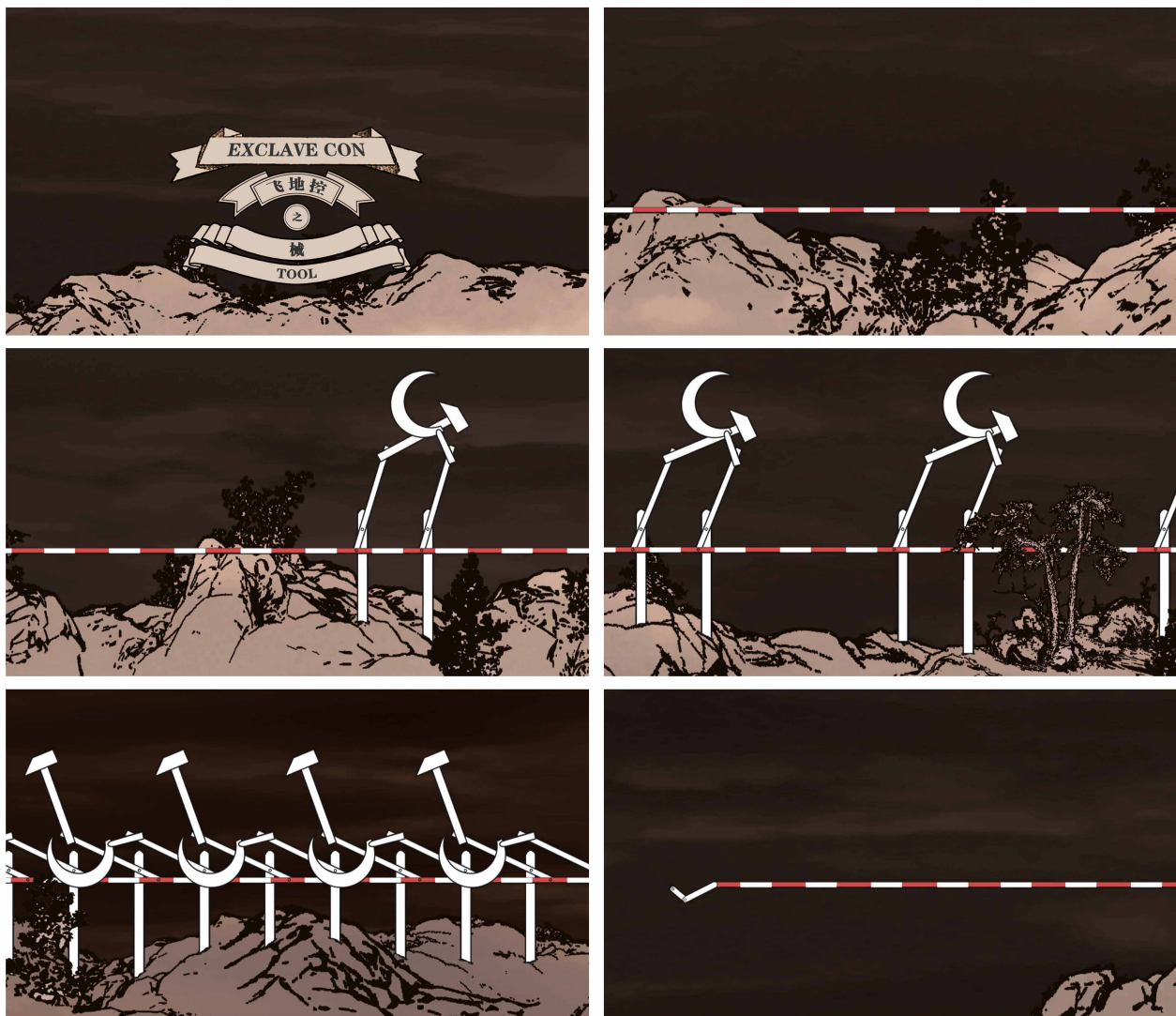


作品 | Works

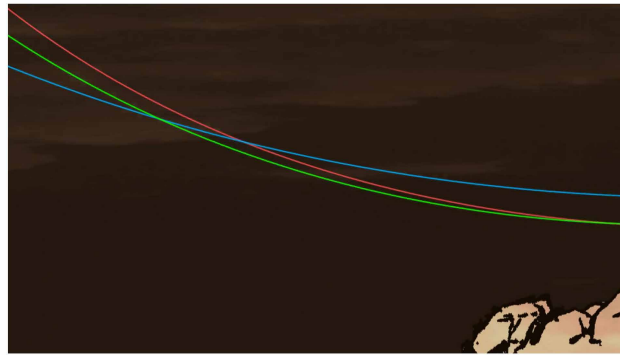
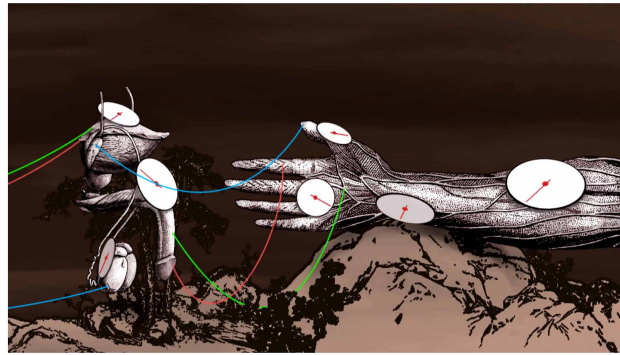
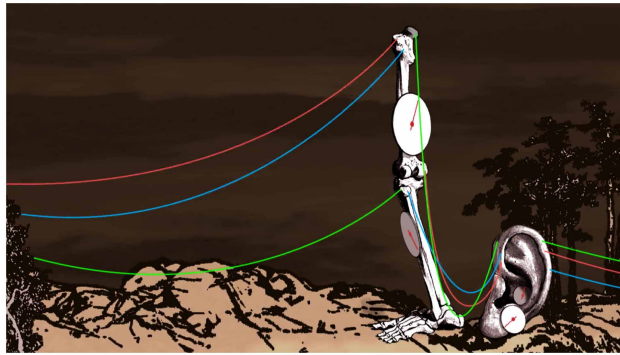
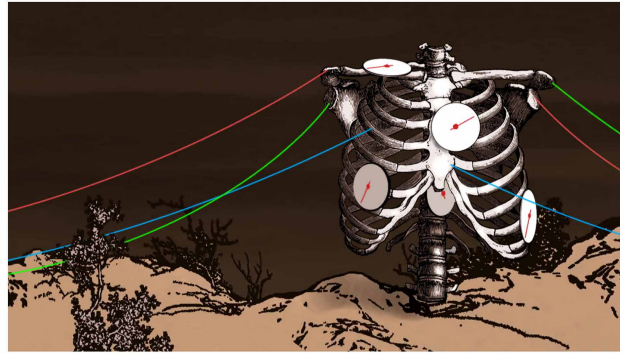
单屏动画 | Single Channel Animation



飞地控之循 | 单屏动画 | 截屏
Exclave Con-Abide | Single Channel Animation | Still | 2' 32" | 2013 | TMH_6763

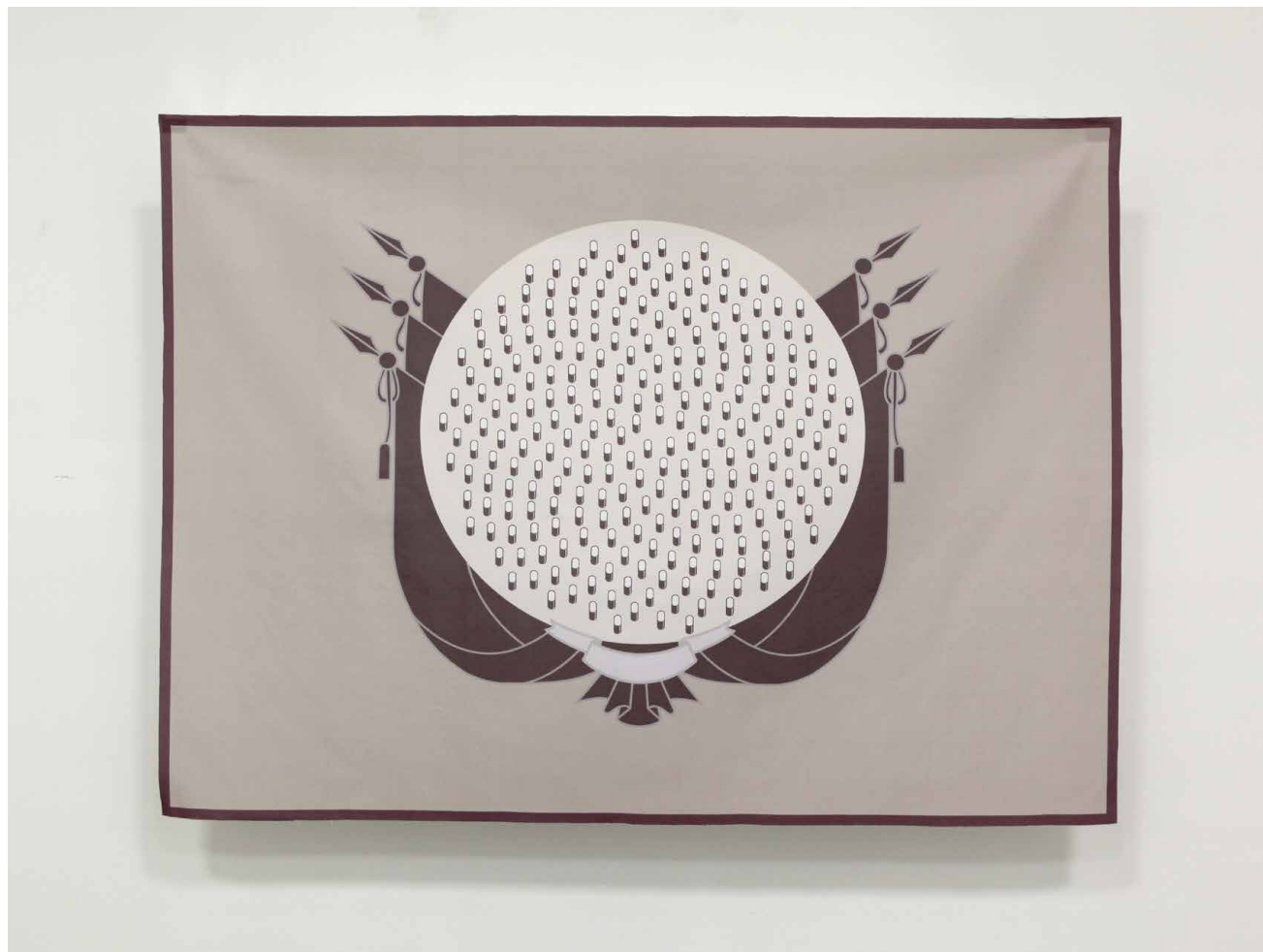


飞地控之械 | 单屏动画 | 截屏
Exclave Con-Tool | Single Channel Animation | Still | 2' 32" | 2013 | TMH_6139

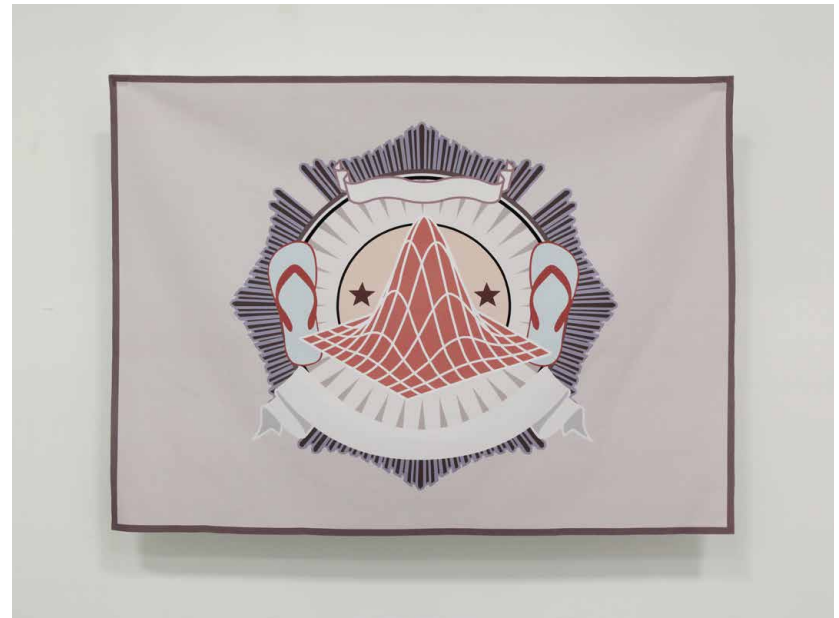


飞地控之饰 | 单屏动画 | 截屏
Exclave Con-Decayed | Single Channel Animation | Still | 2' 32" | 2013 | TMH_8310

图片装置 | Installation Canvas



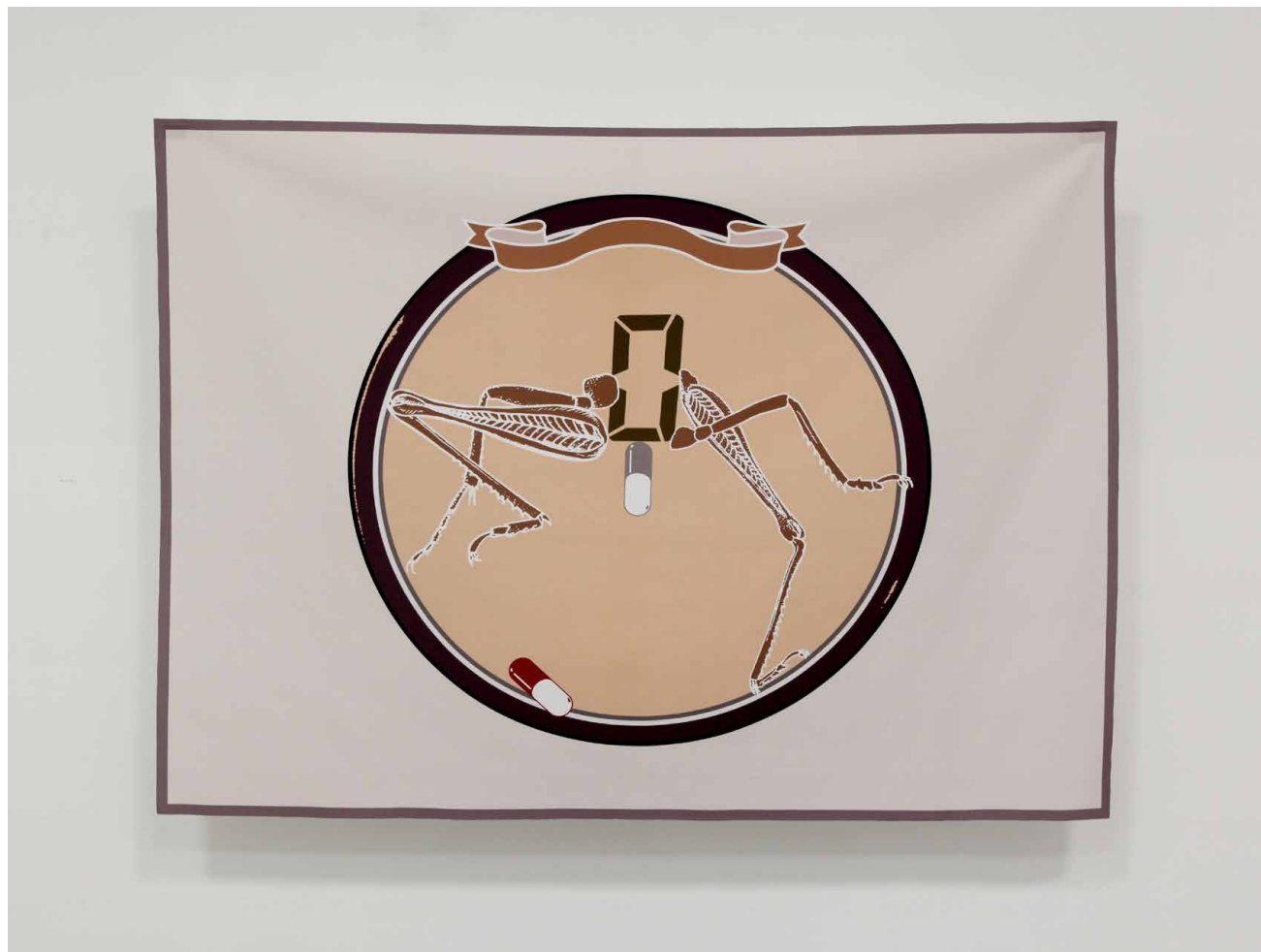
飞地控 - 排练器 35 | 图片装置
Exclave Con - Rehearsal Instrument 35 | Installation canvas | 146 x 190 cm | 2013 | TMH_5600



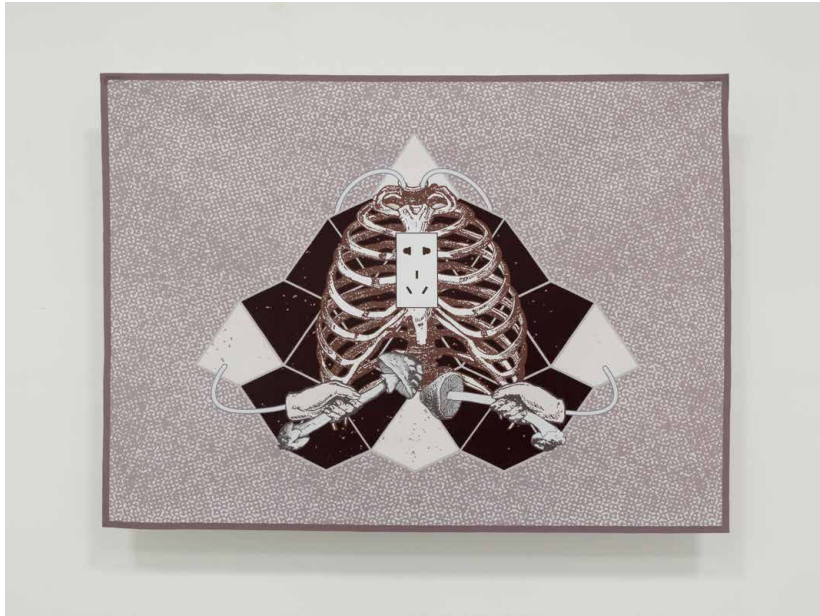
飞地控 - 排练器 29&32 | 图片装置
Exclave Con - Rehearsal Instrument 29&32 | Installation canvas | 146 x 190 cm | 2013 | TMH_5894 & TMH_1529



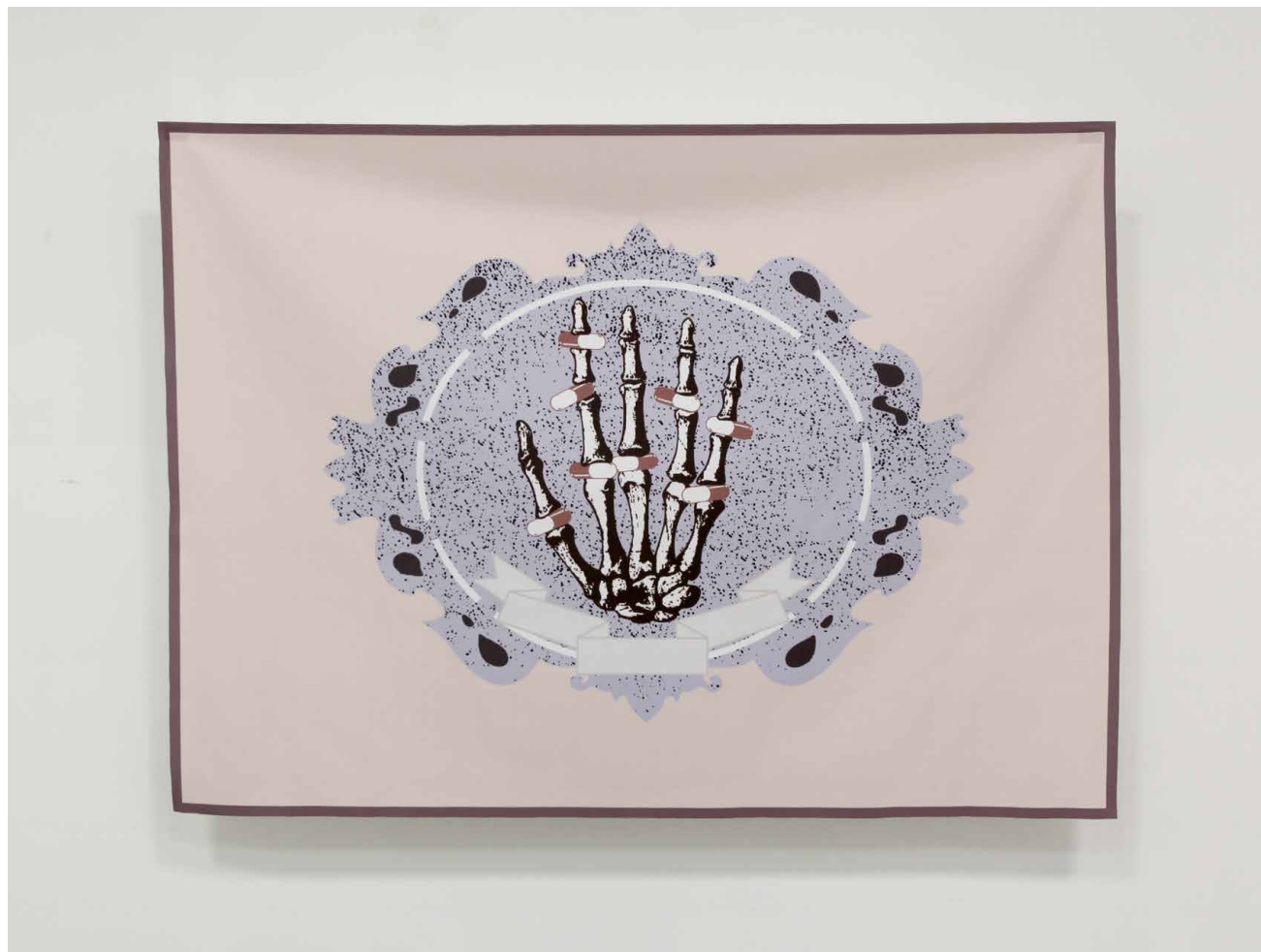
飞地控 - 排练器 01 | 图片装置
Exclave Con - Rehearsal Instrument 01 | Installation canvas | 146 x 190 cm | 2013 | TMH_7664



飞地控 - 排练器 09 | 图片装置
Exclave Con - Rehearsal Instrument 09 | Installation canvas | 146 x 190 cm | 2013 | TMH_2498



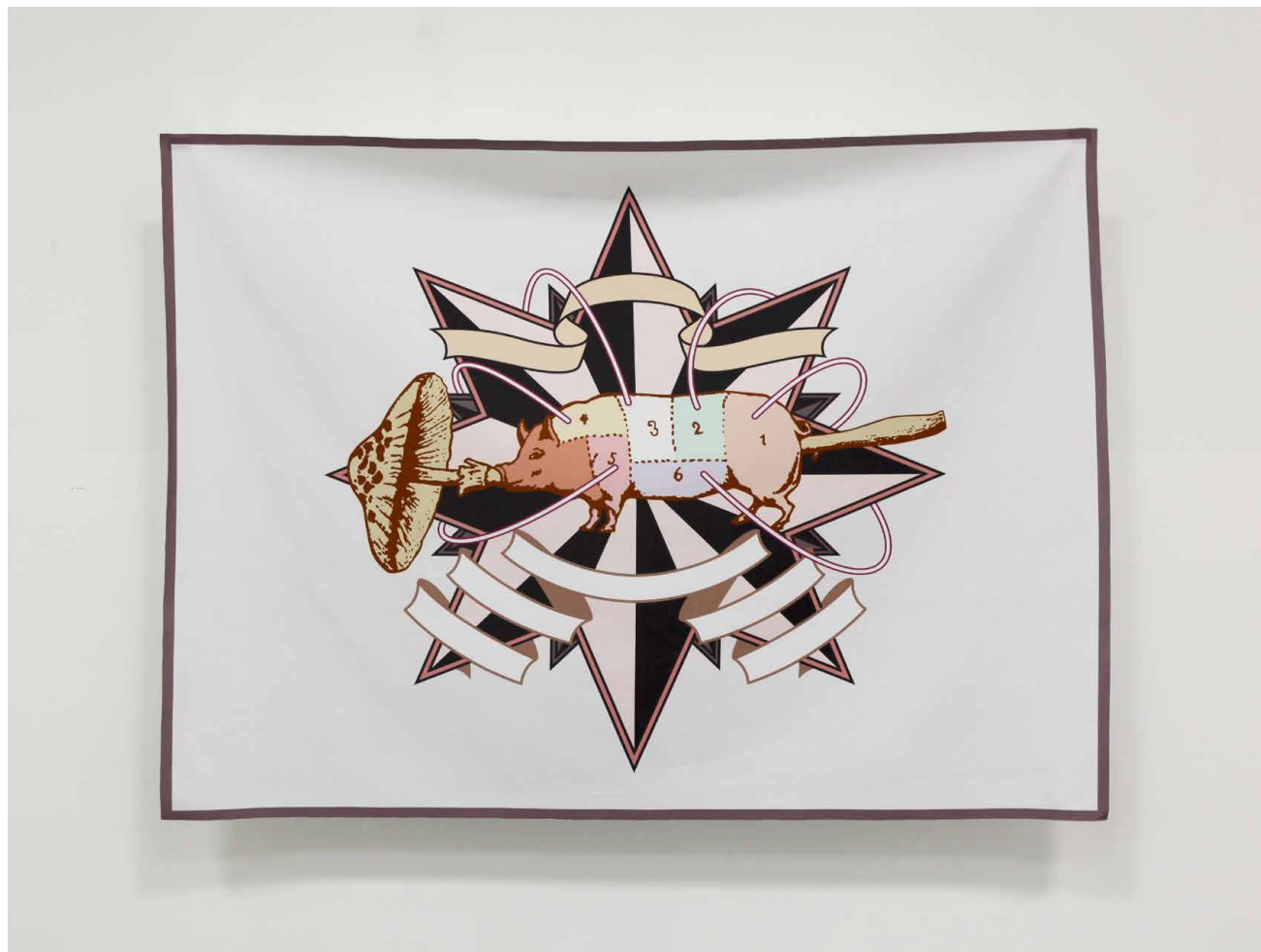
飞地控 - 排练器 23&19 | 图片装置
Exclave Con - Rehearsal Instrument 23&19 | Installation canvas | 146 x 190 cm | 2013 | TMH_7235 & TMH_7150



飞地控 - 排练器 15 | 图片装置
Exclave Con - Rehearsal Instrument 15 | Installation canvas | 146 x 190 cm | 2013 | TMH_5672



飞地控 - 排练器 31&43 | 图片装置
Exclave Con - Rehearsal Instrument 31&43 | Installation canvas | 146 x 190 cm | 2013 | TMH_3086 & TMH_7889



飞地控 - 排练器 18 | 图片装置
Exclave Con - Rehearsal Instrument 18 | Installation canvas | 146 x 190 cm | 2013 | TMH_0777



飞地控 - 排练器 11&08 | 图片装置
Exclave Con - Rehearsal Instrument 11&08 | Installation canvas | 146 x 190 cm | 2013 | TMH_1769 & TMH_3595



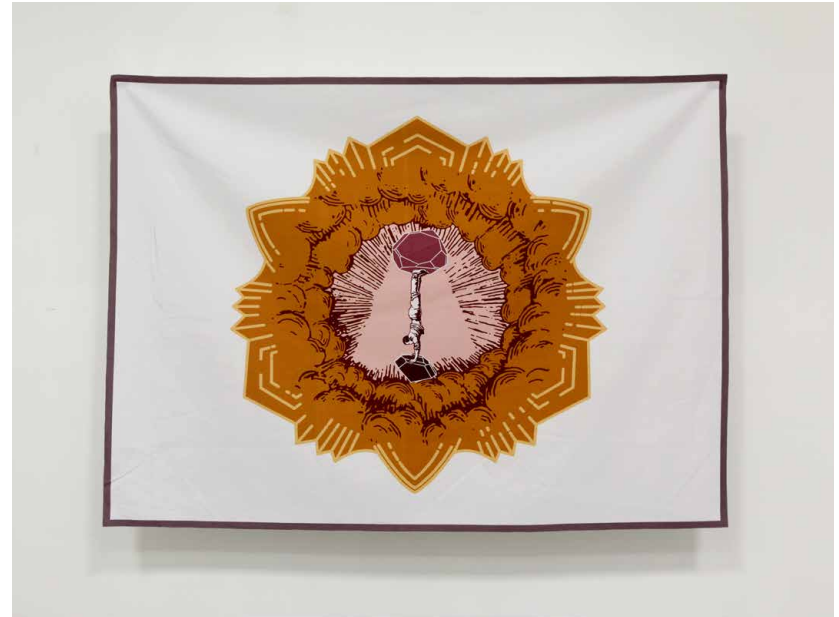
飞地控 - 排练器 33 | 图片装置
Exclave Con - Rehearsal Instrument 33 | Installation canvas | 146 x 190 cm | 2013 | TMH_3636



飞地控 - 排练器 21&27 | 图片装置
Exclave Con - Rehearsal Instrument 21&27 | Installation canvas | 146 x 190 cm | 2013 | TMH_9824 & TMH_2891



飞地控 - 排练器 37 | 图片装置
Exclave Con - Rehearsal Instrument 37 | Installation canvas | 146 x 190 cm | 2013 | TMH_3380



飞地控 - 排练器 04&25 | 图片装置
Exclave Con - Rehearsal Instrument 04&25 | Installation canvas | 146 x 190 cm | 2013 | TMH_2931 & TMH_8593



飞地控 - 排练器 38 | 图片装置
Exclave Con - Rehearsal Instrument 38 | Installation canvas | 146 x 190 cm | 2013 | TMH_9201

简历 | Biography

基本资料

1975 生于灵川, 广西省, 现工作生活在上海

教育

2000 中国美术学院版画系
1994-1996 毕业于上海工艺美术学校

个展

2013 飞地控-唐茂宏个展, 香格纳北京, 北京
2006 星期天, 光州市立美术馆, 韩国
兰花指, 录像及版画, 香格纳H空间, 上海
你们是我的花园, 唐茂宏个展, 龙华路2577号创意大院, 上海

群展

2013 绿盒子, 重绘形貌·媒体现实的空间, 杭州
2012 墨不到, 桃浦当代艺术中心
漂流记, ARKO艺术中心
2011 大字, 孙逊/唐茂宏/张鼎的合作项目, 香格纳北京, 北京
2009 上海滩1979-2009, 上海
2008 快城快客—第七届上海双年展, 上海美术馆, 上海
2007 艺术跃温层, 亚洲新潮, ZKM媒体艺术中心, 卡尔斯鲁厄, 德国
瞬间—第八届全州国际电影节, 全州, 韩国
2006 新加坡双年展 2006: 信念, 新加坡
2005 很多灰, 比翼艺术中心, 上海
亚洲交通, 上海: “磁力·悬浮”, 证大现代艺术馆, 上海

收藏

白兔, 中国当代艺术收藏, 新南威尔士, 澳大利亚
HAUDENSCHILD 收藏, 加利福尼亚, 美国

Basic

1975 born in Lingchuan, Guangxi Province. working and living in Shanghai now.

Education

2000 Graduated from China Academy of Art

1994 -1996 Graduated from Shanghai School of Arts and Crafts

Solo Exhibitions

2013 Exclave Con-TANG Maohong Solo Exhibition, ShanghART Beijing, Beijing

2006 Sunday, Gwangju Art Museum, Korea

Orchid Finger, video & silkscreen prints, ShanghART H-Space, Shanghai

Sunday, Tang Maohong' s solo exhibition, 2577 Longhua Road Creative Garden, Shanghai

Group Exhibitions

2013 Green Box, Remapping- The Space of Media Reality, Hangzhou

2012 Uninkable, Taopu Contemporary Art Centre, Shanghai

Nomadic Report 2012, Arko Art Center, Seoul

2011 Huge Character, Cooperation Project by SUN Xun, TANG Maohong, ZHANG Ding, ShanghART Beijing, Beijing

2009 Shanghai History in Making from 1979 till 2009, Shanghai

2008 Trans Local Motion—7th Shanghai Biennale, Shanghai Art Museum, Shanghai

2007 Thermocline of Art, New Asian Waves, ZKM (Center for Art and Media), Karlsruhe, Germany

JIFF— 8th Jeonju International Film Festival, Jeonju, Korea

2006 Singapore Biennale 2006: Belief, Singapore

2005 A Lot of Ash – A Lot of Dust, BizArt, Shanghai

Asian Traffic Shanghai: Magnetism–Suspension, Zentai Museum of Modern Art, Shanghai

Collections

White Rabbit, Contemporary Chinese Art Collection, New South Wales, Australia

HAUDENSCHILD Collection, California, U.S.A.

ShanghART

香格纳画廊

ShanghART Gallery & H-Space 香格纳画廊和 H 空间
莫干山路 50 号, 16 和 18 号楼, 上海, 中国 200060
50 Moganshan Rd., Bldg 16&18, Shanghai 200060, China
T: +86 21-6359 3923 | F: +86 21-6359 4570 | info@shanghartgallery.com

ShanghART Taopu 香格纳展库
武威路 18 号 (近祁连山路) 8 号楼, 上海, 中国 200433
Bldg 8, No.18 Wuwei Road (near Qilianshan Road), Shanghai 200433, China
T: +86 21-3632 2097

ShanghART Beijing 香格纳北京
朝阳区机场辅路草场地 261 号, 北京, 中国 100015
261 Cao Chang Di, Old Airport Road, Chaoyang District, Beijing 100015, China
T: +86-10 6432 3202 | F: +86-10 6432 4395 | infobj@shanghartgallery.com

ShanghART Singapore 香格纳新加坡
吉门营房, LOCK 路 9 号 02-22, 新加坡 108973
Gillman Barracks, 02-22, 9 Lock Road, Singapore 108937
T: + 65 6734 9537 | F: + 65 6734 9037 | info@shanghartsingapore.com

www.shanghartgallery.com